



Australian Government



**Murray–
Darling
Basin
Authority**

CLLMM CAP / SAG

Scott Ashby

Executive Director, Basin Science and Knowledge



We acknowledge the Traditional Owners and Custodians of Country throughout the Murray–Darling Basin and their continuing connection to land, waters and community.

We offer our respects to the people, the Cultures and the Elders past and present.

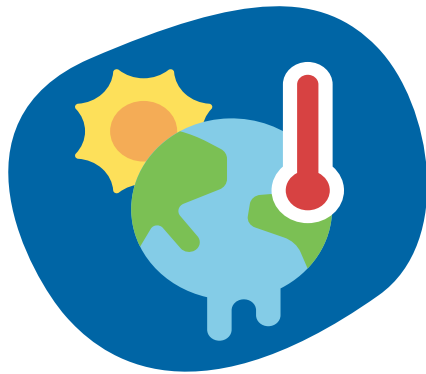
Why review the Basin Plan?

- We've learnt a lot over the last 13 or more years
- We have new science, knowledge and data
- We've heard the lived experience of Basin communities including First Nations peoples
- The Water Act 2007 (Cth) requires regular 10-yearly reviews so the Plan can continue adapt to the challenges ahead



Objectives of the Review

The Review isn't about starting again. It is looking at how we can:



**Enable climate
adaptation**



**Improve outcomes
from available
water resources**



**Enhance First
Nations peoples'
participation**



**Reduce
complexity in the
Basin Plan**

Multiple lines of evidence are informing the Review

INPUTS

OUTPUTS

Updated environmental condition and trend reporting

Social, economic and cultural analysis

Updated river modelling and hydrological assessments

New hydroclimate projections

First Nations science and knowledge

Feedback on the lived experience of the Basin Plan



Looking Back to Move Forward report (*published*)

What we've heard reports (*published*)

Basin Plan Evaluation (including Basin-State matter reporting) - *July 2025*

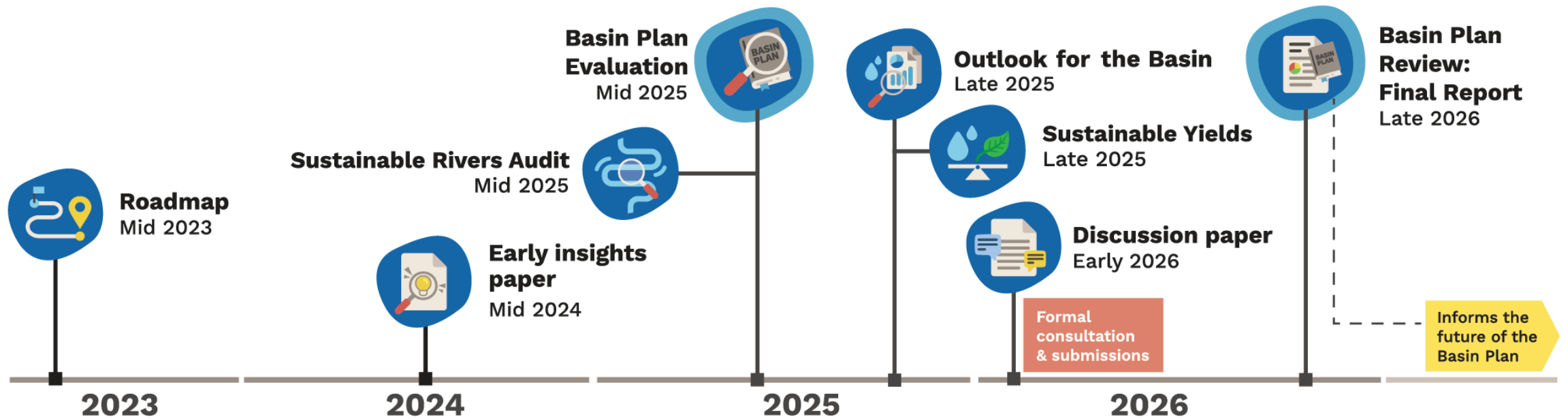
Sustainable Rivers Audit - *July 2025*

Outlook for the Basin – *Late 2025*

Sustainable Yields report – *Late 2025*

Basin Plan Review timeline

We are here



2025 Basin Plan Evaluation and Sustainable Rivers Audit

Published in July 2025



The **Basin Plan Evaluation** assesses what has worked, what has not, and whether the Plan has achieved what it set out to do.



The **Sustainable Rivers Audit** examines the current environmental, social, economic and Cultural condition of the Basin, and how this has changed over time.

2025 Sustainable Rivers Audit



Sustainable Rivers Audit: Key insights



The Basin is gradually getting hotter and drier, with more variability

Salinity has improved

Water quality events are more frequent

Over the past 5 years, river flows have been mostly good

Environmental health has improved since the Millennium drought



Sustainable Rivers Audit: Key insights



Results are mixed for wetlands, floodplains, waterbirds and native fish

First Nations people have told us their rights are poorly recognised and their involvement in water and environmental decision-making is very limited

Basin's economy is growing in line with the rest of regional Australia and valued at \$200 billion

People living in the Basin say it's a great place to live.
While confidence in the future varies across communities



Sustainable Rivers Audit: Valley ecological results

	Longitudinal connectivity	Freshes and bankfull flows	Low floodplain connectivity	High floodplain connectivity	Floodplain tree stand condition	Fish species expectedness	Fish nativeness	Fish recruitment
Northern Basin								
Border Rivers	Very Good →	Good ~	Fair ↗	Good ↗	Good →	Good →	Fair ~	Fair ~
Castlereagh	- ---	Very Good ~	Fair ~	Fair ~	Fair ~	Poor →	Fair ~	Very Poor ~
Condamine	Fair →	Good ~	Poor ~	Fair ~	Fair ~	Fair →	Good ~	Poor ↘
Darling	Good ~	Good ~	Poor ↗	Fair ↘	Good →	Poor →	Fair →	Fair →
Gwydir	Very Good →	Very Good →	Poor ~	Fair ↗	Fair ~	Fair →	Fair ↗	Fair ↘
Macquarie	Very Good →	Very Good ~	Fair ~	Fair ↘	Good →	Poor →	Fair ↗	Very Poor ~
Namoi	Very Good →	Good ~	Fair ~	Fair ~	Poor ~	Fair →	Fair ~	Poor →
Paroo	- ---	- ---	Fair ~	Fair ↘	Good →	Poor →	Poor →	Poor →
Warrego	Very Good →	Very Good ~	Poor ~	Fair ↘	Fair ~	Fair →	Fair ↘	Poor →

	Longitudinal connectivity	Freshes and bankfull flows	Low floodplain connectivity	High floodplain connectivity	Floodplain tree stand condition	Fish species expectedness	Fish nativeness	Fish recruitment
Southern Basin								
Avoca	- ---	- ---	Fair ~	Fair ↗	Fair ↘	Poor →	Poor ~	Very Poor ↘
Broken	Poor ~	Good →	Good ↗	Fair ↗	Fair →	Poor →	Fair ~	Very Poor →
Campaspe	Very Good ~	Very Good ~	Good ↗	Good ↗	Fair →	Poor →	Poor ~	Very Poor ~
Central Murray	Good ~	Very Good ~	Fair ~	Fair ~	Fair →	Poor →	Fair ~	Poor ~
Goulburn	Good ~	Very Good →	Fair ~	Fair ↘	Good →	Poor →	Poor ~	Very Poor ↘
Kiewa	- ---	- ---	Good ~	- ---	Very Good ~	Poor ↘	Poor ↗	Very Poor ↗
Lachlan	Very Good →	Very Good ~	Fair ↗	Fair ↗	Fair ↘	Poor →	Fair ~	Very Poor ↗
Loddon	Good ~	Very Good ~	Fair ~	Fair ↗	Poor ↘	Poor →	Fair ~	Very Poor →
Lower Murray	Fair ~	Fair ~	Fair ~	Fair ~	Fair ~	Poor →	Fair →	Poor ↗
Mitta Mitta	- ---	- ---	Good ~	- ---	Very Good ~	Poor →	Poor ~	Very Poor →
Murrumbidgee	Very Good →	Good ~	Good ↗	Good ↗	Poor ↘	Poor →	Poor ~	Very Poor ~
Ovens	Very Good ~	Very Good ~	Good ↘	- ---	Good →	Poor →	Fair ~	Fair ↗
Upper Murray	- ---	- ---	Good ~	- ---	Good →	Poor →	Fair ~	Very Poor ↗
Wimmera	- ---	- ---	Fair ~	Fair ↗	Very Good ~	Fair →	Fair ~	Very Poor ~

2025 Basin Plan Evaluation



Key Evaluation findings

More than 20% of available water is now dedicated to the environment

Coordinating environmental watering events across catchments and state boundaries

Irrigation is more efficient

Connecting rivers, looking after our wetlands and lakes and waterholes especially in times of drought

Sustained commitment of governments and communities to engage in water reform



Success stories

- Vegetation in Hattah Lakes and Chowilla Floodplain
- Waterbirds breeding in the Lowbidgee
- Working in partnership with First Nations at rivers and wetlands around the Basin
- Barwon Darling first flush supported river connectivity and fish spawning
- Environmental water used in drought to connect to the sea and in water quality events



What it means for communities



- The impact of the Basin Plan has varied across communities and between individuals
- Basin Plan water recovery has impacted the agricultural economy of the Basin
- Water allocation prices are higher, in part because of the Basin Plan



What hasn't worked

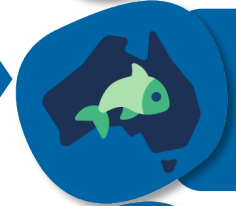
Basin Plan
implementation
is not complete



Our ability to get water onto some floodplains is still constrained



The Plan has not met the expectations of First Nations people



The condition of native fish populations remain a concern



Prescriptive programs have created barriers and slowed progress



The northern Basin requires different management approaches

An aerial photograph of a river meandering through a dense, green forest. The river's surface is calm, reflecting the vibrant colors of the sunset sky, which transitions from deep blue to orange and pink. The surrounding landscape includes patches of cleared land and agricultural fields in the distance. A semi-transparent dark blue rectangle is overlaid on the lower-left portion of the image, containing white text.

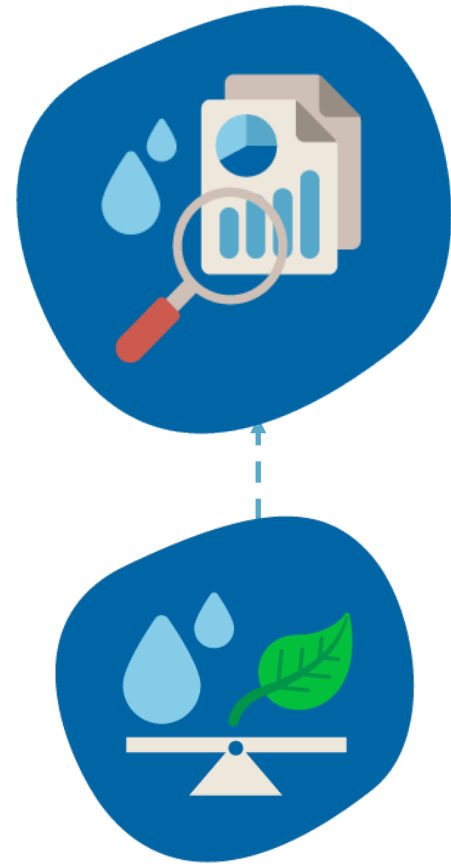
Lessons from the Evaluation and Sustainable Rivers Audit will inform the 2026 Basin Plan Review.

Outlook for the Basin & Sustainable Yields

To be published in late 2025

The **Outlook for the Basin** will tell us how the Basin's environmental, social, economic and cultural condition may change under a range of future climate scenarios.

The **Sustainable Yields** report will provide an assessment of the likely impacts of climate change on the Basin's surface water and groundwater resources.



Discussion paper & public consultation

- In early 2026, we'll release a **Discussion Paper**. It will outline options that we are considering.
- This will be followed by a **public consultation** that will run for at least 12 weeks.
- The final Review Report recommending changes to the Basin Plan will be delivered by the end of 2026.



The public consultation to be held in early 2026 is everyone's opportunity to share their feedback or make a formal submission

You can share your ideas at any time to help shape the 2026 Basin Plan Review

- Contact a **Regional Engagement Officer**
- Call us on **1800 230 067**
- Email us engagement@mdba.gov.au
- Join the conversation via **LinkedIn, X and Facebook**
- Visit the virtual yarning circle on our **First Nations Info Hub**
- Fill out a feedback on our website mdba.gov.au/basinplanreview
- Subscribe to our newsletter *River Reach*



We will invite formal submissions in early 2026



Australian Government



**Murray–
Darling
Basin
Authority**

Thankyou

 mdba.gov.au

 1800 630 114

 engagement@mdba.gov.au

Office locations – *First Nations Country*

Adelaide – *Kaurna Country*

Albury – *Wiradjuri Country*

Canberra – *Ngunnawal Country*

Goondiwindi – *Bigambul Country*

Griffith – *Wiradjuri Country*

Mildura – *Latji Latji Country*

Murray Bridge – *Ngarrindjeri Country*